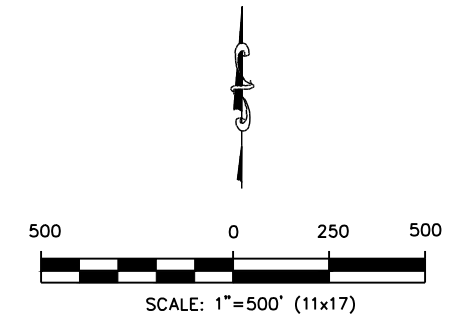
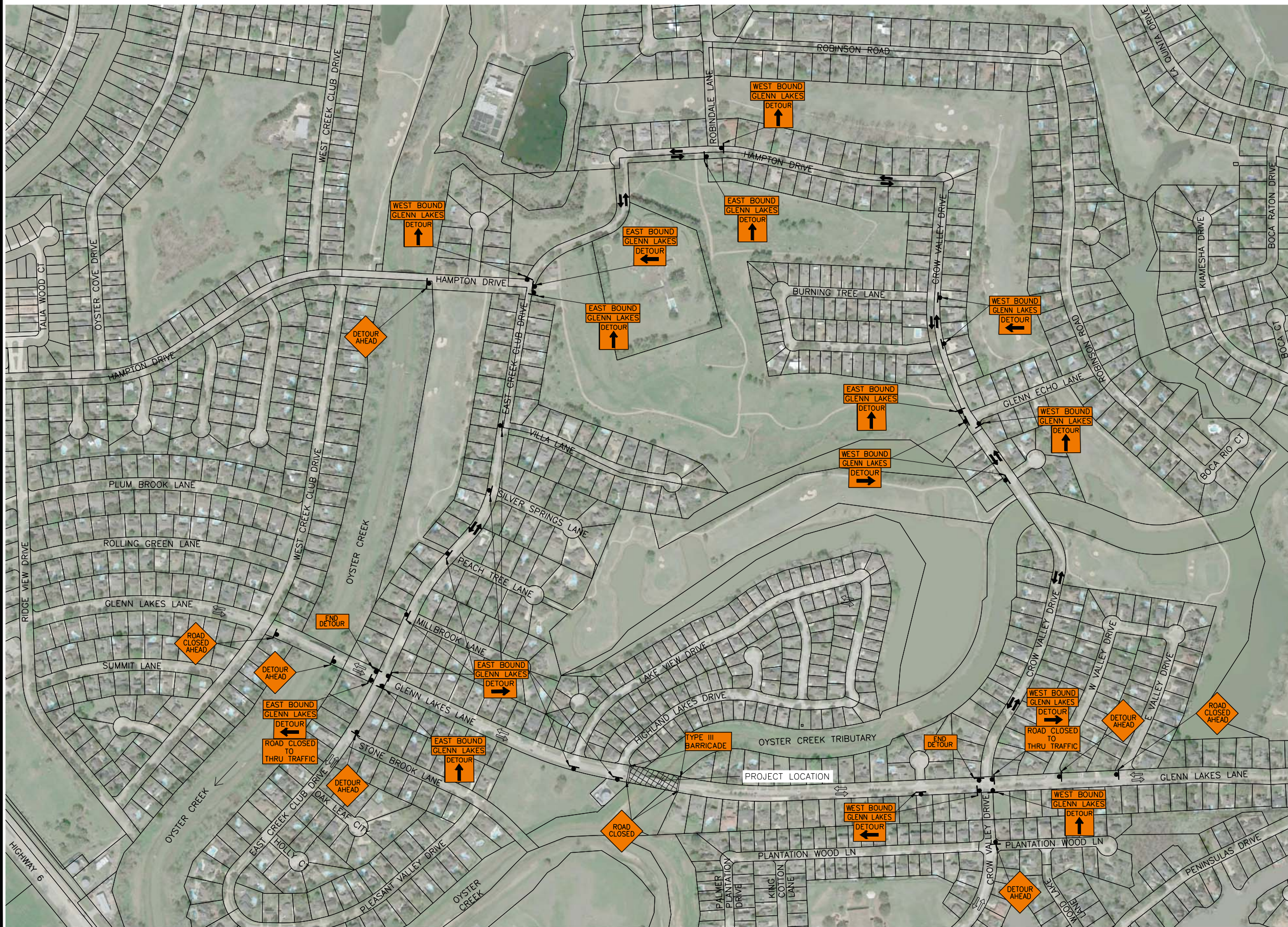


GC Engineering, Inc.
 M:\Projects\c - 0798 - city of missouri city-glenn lakes bridge over oyster crk. trib\Drawings\07 Detour Plan.dwg Mar 19, 2019-4:52pm sbarron



No.	DATE	REVISION

CITY OF MISSOURI CITY
 TEXAS

GC ENGINEERING, INC.
 2505 PARK AVE., PEARLAND, TEXAS 77581
 Phone: (281) 412-7008 FAX: (281) 412-4623
 TBPE Registration No. F-7889

CONSTRUCTION PLANS FOR:
**GLENN LAKES BRIDGE
 OVER OYSTER CREEK TRIBUTARY
 (BRIDGE NO. 080-R004-80-002)**

DETOUR PLAN

SCALE: 1"=500'
 SUBMITTED DATE: MARCH 2019
 JOB No.: C-0798
 SHEET 11 OF 106

SOURCE: AERIAL IMAGE FROM GOOGLE EARTH DOWNLOADED IN OCTOBER 2016